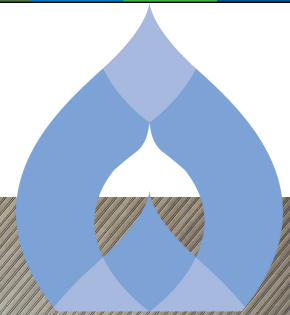




THE GLOBAL GOALS



KALASIN UNIVERSITY

# Kalasin University

## SDG Report 2021



SUSTAINABLE  
DEVELOPMENT GOALS





# Contents

Message of the President.....	1
-------------------------------	---

Introduction of Kalasin University.....	3
---	---

## 1

No Poverty .....	7
------------------	---

## 4

Quality Education.....	12
------------------------	----

## 11

Sustainable Cities and Communities.....	23
---	----

## 16

Peace, Justice and Strong Institutions.....	32
---	----

## 17

Partnerships for the Goals .....	39
----------------------------------	----





# Message from the President



Kalasin University envisions itself to be number 1 in Thailand in the field of local development based on science, social sciences, technology, and innovations by 2027 with the goal to achieve the sustainable development under the principles "To Leave No One Behind". In 2020, the world has encountered Covid-19 pandemic, the normal life in every nation has been disrupted and has changed to the new normal life. This is a tremendous challenge for universities to help support the well-being of people in the society and the global economy. Moreover, in 2021, Kalasin University has been initiatively stepping into the SDGs for the first time on its campuses. With the collaboration of administrators and staff, Kalasin University is trying to improve both the university and society. For the first initiation of SDG, Kalasin University has implemented 5 SDGs including: SDG 1 – No Poverty, SDG 4 – Quality Education, SDG 11 – Sustainable Cities and Communities, SDG 16 – Peace, Justice and Strong Institutions, and SDG 17 – Partnership for Goals through various activities such as research projects related to solve poverty's problems, to promote social inclusion, to improve quality and access of education, to reduce inequality, to promote peace, good governance, and prosperity of the economic status of the people in the region and countries by 2030 according to the spirit of the Sustainable Development Goals proposed by the United Nations which is captured in a single phrase: 'To Leave No One Behind.'



## Message from the President (2)

While the government is attempting to deal with the challenge of sustaining and improving people's quality of life during the fluctuating economy and high conflict of people in the country, we need to collaborate to terminate poverty, provide education to everyone, and preserve the environment for sustainability. The year 2021 is also the year that Kalasin University has intensively focused on collaborating with society, the dynamics of Thailand and the world, the challenges caused by the pandemic, and the tendency for the sustainable success in the future. Kalasin University has provided contributions to Thailand's efforts to fight against Covid-19 pandemic. The university has also responded to local and national challenges in terms of innovative methods to maintain quality education in teaching, researching, and providing academic services to community while continuing to focus on the long-term sustainability goals as mentioned in this report. The university has summarized the activities leading to the success of the SDGs implemented by our administrators, staff, students, and partners in terms of research, teaching, engagement, outreach, and operations reflecting the attempt to promote the sustainability and participation for the future of all.



Associate Professor Jirapun Huaisan  
President of Kalasin University



# Introduction

Kalasin University was established under the Kalasin University Act, B.E. 2558, announced in the Government Gazette, Volume 132, Part 86a, on September 8, 2015 to merge Kalasin Rajabhat University according to the law on Rajabhat University and Rajamangala University of Technology Isan, Kalasin Campus under the law on Rajamangala University of Technology to be Kalasin University as a juristic person and a government agency under the law on budget procedures under the Office of the Higher Education Commission. Regarding Section 6 of the Kalasin University Act, the university is the academic institution that provides knowledge and expertise in practice related to the profession and higher professions with the aims to provide education and promote research to create and develop knowledge and technology, to provide academic services to the local community and society, to provide educational opportunities to people, to conserve the arts, cultures, and sports. Moreover, the university also support local community and the government in developing community and conserving environment. To enable Kalasin University in keeping up with the pace of the dynamics of education and the survival of the organization (Survival), it is necessary to adjust the strategy of higher education to be excellent through Reinventing University Strategy. This enables the university to provide education in accordance with the needs of communities and localities in Kalasin Province and nearby areas through the new vision “To be number 1 in Thailand in the field of local development based on science, social sciences, technology, and innovations by 2027” with the purposes of producing graduates who have moral, ethics, skills of working and integrating knowledge of science, technology, and innovation related to the dynamic of changing world. The university’s missions also focus on developing the area based on the location of university through the 3 flagships which are science and agricultural technology, research and development for agriculture, and the ecotourism and culture respectively.





**Location :** There are 4 main areas of Kalasin University with total area of 3,800 rai 2 ngan 92.5 square wa, as the following details:

(1) Namon area is located at Ban Hua Ngua, Song Nuea Sub-district, Namon District, Kalasin Province, with the area of 2,119 rai 30.8 square wa.



(2) Nai Mueang or In Town area is situated on Kasetsoomboon Road. Kalasin Subdistrict, Mueang District, Kalasin Province, with the area of 439 rai 1 ngan 65.90 square wa.



(3) Phu Sing Research and Training Center is located in Phu Din Subdistrict. Mueang District, Kalasin Province, with the area of 1,155 rai.





(4) Kamalasai District area is in the town of Kamalasai District, Kalasin Province with the area of 7 rai 95.8 square wa.

## Strategies for the Development of Kalasin University

The direction for driving the university after the adjustment of the higher education strategies for the excellence of Kalasin University in terms of vision, mission, desired characteristics of graduates as well as specifying the framework, tendency, and direction of educational management in accordance with the national policy and area-based strategy based on knowledge of science, technology, and innovation to develop competitive production potential and services which can be explained as follows:

**Philosophy :** Knowledge Cultivates Values, Wisdom Strengthens Society

**Determination :** Produce Good Graduates who can work and guide the society

**Vision :** To be number 1 in Thailand in the field of local development based on science, social sciences, technology, and innovations by 2027

### Missions :

- (1) Develop modern educational management with quality to create the learning society.
- (2) Develop science and innovation for the foundation economy.
- (3) Build up the growth based on the quality of life that is environmental friendly.
- (4) Provide management based on good governance.

### Graduates Characteristics :

The graduates of Kalasin University should "Be patient, hardworking, and professional".

## Strategic issues driven by university for 5 years (2021-2025)

### Strategy 1

Develop modern, quality education and creating a learning society

### Strategy 2

Develop Science and Innovation for the Foundation the Economy

### Strategy 3

Build growth on the quality of life that is environmentally friendly

### Strategy 4

Management with good governance



# Sustainable Development Issues

## SUSTAINABLE DEVELOPMENT GOALS



Every strategy of the university development has a goal focusing on sustainable development through identifying the indicators specified by the committees from all stakeholders within the university and approved by Kalasin University Executive Committee. In 2021, 5 indicators of SDGs were considered for the implementation in many activities and projects which are:

- SDG 1 – No Poverty
- SDG 4 – Quality Education
- SDG 11 – Sustainable Cities and Communities
- SDG 16 – Peace, Justice and Strong Institutions
- SDG 17 – Partnership for Goals

The results of the implementation of the activities and projects of 5 indicators were explained as follow:







## SDG 1: NO POVERTY

Kalasin University has implemented various projects to help students in Kalasin Province and other regions to alleviate poverty problems as follows:

**Providing scholarships and increasing income during learning.**

In academic year 2020, Kalasin University provided 1,426 scholarships to students

In addition to providing scholarships to all groups of students, Kalasin University also supports free dormitories for Kalasin University students who got the Homegrown Teacher Scholarships, and offering food, food banks, reasonable price accommodation, and bicycle for general students.





## SDG 1: NO POVERTY

### Reasonable Price Dormitory

The Leelawadee and Ratchaphruek students' welfare dormitory



### The Income during Learning

The university supports students to have income while learning through the Youth Volunteer Project and the Integrated Sub-District Economic and Social Improvement Project by assigning 5 students to work in each target sub-districts which they can earn 5,000 baht per month in a span of 12 months. For international support, the university also provides scholarships to students from Lao People's Democratic Republic.







## SDG 1: NO POVERTY

### Projects on Poverty Alleviation

Kalasin University implemented project through research. “Cooperative Integrated Area-Based Development to Solve Poverty Comprehensively and Accurately: A Case Study in Kalasin Province” in 2020 supported and funded by the Science, Research, and Innovation Promotion Fund and the Administrative and Management of Research and Innovation Fund on area-based development in the amount of 10,000,000 baht for research and alleviate the poverty of people in Kalasin province.



During its first year, the research project was focused on developing the model to solve poverty together with the local government organization and local networking partners consisting of sub-district committees, people in community, occupational groups, and target underprivileged groups. The instrument used in this phase were the forum for the integration of poverty alleviation projects and the activities of life plans or household plans based on real needs. This helped improve the knowledge and skills of the underprivileged people to meet the needs received from the forum by listening to their voices. The results from the voice hearing and activities of life planning were used to produce household development plan and potential development of other related professional groups through the use of Coaching by experts from Kalasin University who came to take care of the target households in order to transfer knowledge and expertise suitable for the development of each group. The Mentoring was also implemented to monitor the development of each household throughout the development period in connection to the Community Merit Fund and Community-Based Occupational Fund to support the Ton Kla Tha Chon or Poverty Challenger (target underprivileged people) to use funds as capital for career development. The community set up committees to control and monitor the use of fund within the target sub-district and for circulating the income among the target group.



## SDG 1: NO POVERTY



### Offering Assistance

Kalasin Province was able to provide the assistance to the target underprivileged people of 58 households supporting the Kalasin Happiness Model or KHM projects. This helped 2,360 underprivileged accessed the public welfare, and to build and renovate 696 houses. Kalasin University helped to transfer 58 households which urgently need the assistance to the Community Organization Development Institute, Community Organizations Council, Farmers Council, Farmers Reconstruction Fund, Pitthong Lang Phra Foundation, and the Community Merit Fund established by the cooperation of Kalasin University and Klang Muen Subdistrict Municipality helping the target groups receive immediate assistance.







## SDG 1: NO POVERTY

### **The Project to support the new entrepreneurs through the University Business Incubator Unit of Kalasin University**

The University Business Incubator of Kalasin University supports the development of entrepreneurs such as Mr. Atthaphon Ngoenyaung, student entrepreneur, who owns the business shop “Fincactus” by providing training on plant propagation by tissue culture techniques held on the 3rd– 4th of November 2021 under strict precautionary measures to prevent and control the spread of the Coronavirus Disease 2019 (COVID-19)



In addition, the University Business Incubation of Kalasin University also conducted a visit to study the context, problems, obstacles, and solutions by integrating science, technology, and innovation for business operations from the Local Chicken Farming Enterprise Group under the Pre-Talent Mobility Project at Khiri Farm, Non Nam Klieng Subdistrict, Sahatsakhan District, Kalasin Province under strict precautionary measures to prevent and control the spread of the Coronavirus Disease 2019 (COVID-19)





## SDG 4: QUALITY EDUCATION

For the implementation of the projects and activities supporting SDG 4: Quality Education, Kalasin University has focused on the students in the field of education since they are the majority of the students in university. Out of 3,625 total number of students of Kalasin University in academic year 2020, there were 1,547 students studying education representing 42.68%. Furthermore, there were 860 new graduates, 321 of them were from the field of education representing 37.33 % of all graduates.



Kalasin University participated in Homegrown Teacher Project or Khru Rak Thin, sponsored by the Equitable Education Fund (EEF) to provide educational opportunities for students in remote areas to get scholarship, study to be a teacher, and comeback to be the teacher at the school in their own community. This project aims to promote equality in education including promoting and improving the quality and efficiency of teachers to have the ability to manage teaching and learning, and to develop children and youth according to individual differences. Kalasin University provided 32 scholarships to produce early childhood and primary school teachers for the first batch.





## SDG 4: QUALITY EDUCATION

### Life-Long Learning

Kalasin University has offered life-long education with the integration of many academic partners based on the following:

Kalasin University is a public higher education institution located in Kalasin Province. The university provides knowledge and expertise in professional practice with the aims of providing education, promoting research, developing knowledge and technology, providing academic services to local and society, providing educational opportunities to the public, conserving religion, arts, culture, and sport, supporting government and local activities, and supporting community development and environmental conservation. Kalasin University is consist of 6 faculties with a total of 67 diploma, bachelor's degree, master degree, and doctoral degree. The university has educational partners in providing life-long education such as schools under the Kalasin Provincial Education Commission, Roi Et Provincial Education Commission, and Mukdahan Provincial Education Commission under the following objectives:





## SDG 4: QUALITY EDUCATION

1. To collaborate in the development and management of Continuous and Linking Curriculum or CLC between basic education, vocational, and higher education.

2. To cooperate in organizing vocational training to develop competency in Continuous and Linking Curriculum or CLC.

3. To join in organizing the teaching and learning process for students participating in Continuous and Linking Curriculum or CLC between basic education, vocational, and higher education.

4. To collaborate in developing the research of STREAM Educational Model for technology teachers in Kalasin Province.

5. To cooperate in carrying out other appropriate and necessary activities.

In the previous academic year, Kalasin University has conducted Academic Memorandum of Understanding with many partners and announced the Regulations of Kalasin University on Lifelong Education B.E. 2562 which gives both students and general people universal access to quality education.







## SDG 4: QUALITY EDUCATION

### Access to Educational Resources

Kalasin University has provided a library that can be accessed for both on site and online platforms to support the lifelong and distant learning of students and general people through the website <https://are.ksu.ac.th/>



### Lifelong learning in the dimension of educational services in the community outside the university.

Kalasin University has organized activities to integrate teaching, learning, and academic services in terms of education for the community through Youth Volunteer Project and the Sub-district Economic and Social Upgrading Project in the previous academic year which can be explained as follows:

The results of the Youth Volunteer Project at Thap Pla village community, Nong Krungsri district, Kalasin province are as follow:

#### 1. The results to students

Students joined Thap Pla village community at Nong Krungsri district, Kalasin province to gain knowledge and understanding about new business model development and to promote Start-up for selling goods. Moreover, they also learned about group management to promote community enterprises and studied the dimensions of improving the quality of life of community enterprise members. They also learned from the local sages in the community about the way of life of the people in the community to help solve community problems as well as to encourage communities to improve their quality of life in the 21st century living.



## SDG 4: QUALITY EDUCATION

### 2. The results of the project to university

The university received the teaching model based on Community Based Learning (CBL) and working with the Quadruple Community (Local Community and Kalasin University).

### 3. The results of the project to the community

#### Social Dimension

Thap Pla village community, Nong Krungsri district, Kalasin province acknowledged the potential of community enterprise management to develop a basic economy stimulating the community to create jobs and careers, and to generate incomes in the community resulting in a better quality of life of the people.

#### Economic Dimension

Thap Pla village community, Nong Krungsri district, Kalasin province understood how to expand the business channel of food processing products to increase the reputation, quality, and standards resulting in getting an income estimating to 50,000 baht per day.

An effective management system with quality and standards that are acceptable from outside market has helped develop a standard system for food processing products together with training and development on improving the standard to get the certification of Community Product Standards for the manufacturer of food products in community.







## SDG 4: QUALITY EDUCATION

### The Integrated Sub-district Economic and Social Upgrading Project

Kalasin University has carried out activities outside the university through an integrated sub-district economic and social upgrading project covering 20 sub-districts in 3 provinces, namely Kalasin province, Mukdahan province, and Amnat Charoen province through employment of students, new graduates, and the general people. A total of 20 people per sub-district was assigned to work in the development projects to increase the economy and society via the integration of the Project of University to Sub-district to Create a Root for Country or U2T. This project aims at creating a concrete change to solve the poverty problem in the sub-district through the mobilization of two potential units which are the sub-district and the university. Moreover, several stakeholders have joined this project including the governor of each province, the local administrative organizations, people in each community, and the private sector such as Betagro Company, and Mitr Phol Sugar Company. There was a specification of targets in 4 aspects which are:

Part 1: The assessment of Sub-district potential

Part 2: The design of operation to alleviate the poverty based on the sub-district goals in overcoming poverty

Part 3: The assessment of the integrated sub-district economic and social upgrading projects and indicators

Part 4: The development of mechanisms for the cooperation between the district and the university





## SDG 4: QUALITY EDUCATION

### Part 1: The assessment of Sub-district potential

The profiles of all 20 sub-districts have been made with the following steps:

1. Introduce the project to the executives of local government organizations in the area
2. Build up the credibility and rapport with the area and people
3. Find out the initial information on the needs of the community
4. Assess the potential of sub-districts and create profiles for all 20 sub-districts

The examples of sub-district profiles including Nong Pan Subdistrict, Kamalasai District, Nako Subdistrict, Kuchinarai District, and Lampao Subdistrict, Mueang District, Kalasin Province are indicated below:

Regarding the preparation of profiles in all 20 sub-districts, the potential of the sub-districts can be analyzed and assessed according to four levels of criteria as follows:

1. Sub-districts that cannot survive, 2 sub-districts
2. Sub-district that can survive, 2 sub-districts
3. Sub-districts that focus on sufficiency, 14 sub-districts
4. Sub-districts that move forward to sustainability, 2 sub-districts

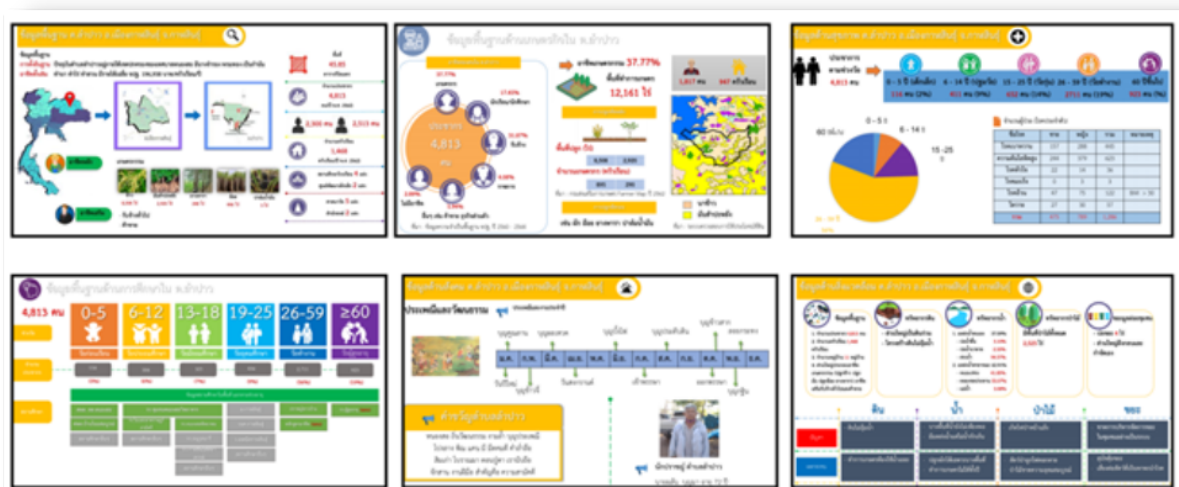


Figure : The demography information of the district





## SDG 4: QUALITY EDUCATION

### **Part 2: The design of operation to alleviate the poverty based on the sub-district goals in overcoming poverty**

Kalasin University has carried out Quick Win activities with focus on career development and creating new careers (OTOP product upgrade /Other Occupations), utilizing knowledge to community services (Health Care / Technologies), promoting the environment / Circular Economy (to increase revolving income for the community), and creating and developing Creative Economy (promoting Enhance tourism), respectively. There were 67 activities distributed to 20 sub-districts (as shown in Table 1) such as Kut Khao sub-district, Kuchinarai district, Kalasin Province has created and developed the potential to upgrade the products in the sub-district in the target group of mushroom growers, Thai cloth umbrella group, and youths in Kut Khao sub-district. There was the knowledge transfer to help the community in terms of Health Care / Technologies, and environmental promotion / Circular Economy (increasing the income for the community). The mushroom cultivation could help generate income to the community. Moreover, there were activities held by the cooperation at the district level including the Sub-district Administrative Organization, Kut Kao Subdistrict Community Health Promoting Hospital, the public and private sectors in the area like Mitr Phol Sugar Company.





## SDG 4: QUALITY EDUCATION

### Part 3: The assessment of the integrated sub-district economic and social upgrading projects and indicators

Kalasin University tried to convince the community to accept the collected data through the participation of leaders in the sub-district such as the village chief, the village head, the chairman of village health volunteer, the chairman of the local administrative office, the director of local schools in the area, district health promotion hospital, and the district-level network partners such as the district agriculture office, the district community development office, and the private sectors. The processes of the project consisted of: 1) organizing a brainstorming forum to analyze the needs and problems, and 2) visiting the community to verify problems and needs with community leaders and villagers.





## SDG 4: QUALITY EDUCATION

### **Part 4: The development of mechanisms for the cooperation between the district and the university**

Kalasin University organized workshops to train the people who are responsible of the project and contractors by a team of experts from Betagro Group in preparing the Effective Planning to support the Quick win activities which the knowledge can be used to bring in organizing activities to develop the potential of leaders for the creation of holistic area-based development plans. Many stakeholders were invited to join this activity such as the district agriculture office and the district community development office to help create a plan of activities/projects for various careers. Finally, numerous projects were carried out to be implemented in the creation of various activity plans/projects with the support of the district local leaders, and sub-district agencies as advisors of the following projects:

#### **The project of hand-woven fabric product development of Nako sub-district, Kuchinarai district Kalasin Province**

This project aimed at improving the quality of community products, and promoting the income generation for the community by developing products to be more attractive for tourists.

#### **The project of safe rice production to increase income for farmers in Nong Pan Sub-district, Kamalasai District, Kalasin Province**

The aim of this project were to reduce production costs, decrease the use of herbicides, and reduce burning rice straw. In addition, local crops are promoted to be planted in the rice fields to increase the farmers' income by 30 percent.

#### **Project to create a career of hand-woven Isan reed mat products for sale of Nong Masaew Sub-district, Mueang District, Amnat Charoen Province**

The goal of this project was to create an additional career and income for people in community not only the income from rice farming. A prototype product from reed mats, which was the identity of the community, was created. The production of reed mats could add value and increase income for the community.

#### **The project of efficiency development in organic vegetable production Na Kok Sub-district, Nikhom Kham Soi District Mukdahan Province**

The project aimed at creating a new career and promoting the increase of circulating income for the community by growing and selling vegetables as an additional occupation not only the income from rice farming.





## SDG 4: QUALITY EDUCATION

**The development of mechanisms for the cooperation between districts and university**

Kalasin University has a follow-up process and periodically notifies the operation with partners such as the Damrongtham Center of Mukdahan Province, Mukdahan Social Security Office, Amnat Charoen Social Security Office, Kalasin Provincial Community Development Office, and Damrongtham Center of Amnat Charoen Province in developing the collaborative mechanisms.



**The Development of collaborative mechanisms between universities and networking partners**



## SDG 11: SUSTAINABLE CITIES AND COMMUNITIES

### Arts and cultures support

Kalasin University has support in arts and culture through the implementation of the arts and cultures exchange project of the higher education network, the academic seminar on arts and cultures on the occasion of the 6th Anniversary of Kalasin University, and the research projects "Research and Development of Dvaravati Cultural Area of Mueang Fa Daet Song Yang of Kalasin Province" with a budget of 1,889,650 baht.



### Art and heritage contribution

Kalasin University designed the dance from the study of Baisema or sculptured tablet stone of Mueang Fa Daet Song Yang of Kalasin Province with following purpose: 1) to participate in a local dance ceremony to pay homage to Phra That Yakhu pagoda through the dance called "Phimpha Philap Dance", and 2) To have the unique dance for having good fortune to perform in various special occasions or to welcome guests and to show in traditional merit making ceremony by dancing called "Phimpha Somanat".





## SDG 11: SUSTAINABLE CITIES AND COMMUNITIES

### The access to the university's area and resources of the public

Kalasin University allowed the public to use the university area and resources such as library, building, and venues to organize various events. During the escalating spread of Covid-19 in Kalasin Province, the multipurpose building of Kalasin University was used as a field hospital for Covid-19 patients with the cooperation of Kalasin Provincial Public Health Office.



The field hospital for Covid-19 patients with the cooperation of Kalasin Provincial Public Health Office







## SDG 11: SUSTAINABLE CITIES AND COMMUNITIES

### The use of libraries in Kalasin University



### The development of green areas for multipurpose usage





## SDG 11: SUSTAINABLE CITIES AND COMMUNITIES

### Guideline for Sustainability

#### Goals of Sustainable Development

Kalasin University has designed the space within the university to meet the sustainable development goals which included designing energy-efficient buildings, and using renewable energy, using bicycles, electric cars, as well as corridors within the campus. The university also created a network to support the work from home campaign of the government and to move towards a university of sustainable development.

#### Using bicycles on campus







## SDG 11: SUSTAINABLE CITIES AND COMMUNITIES

### Electric car at Phu Sing Research and Training Center, Kalasin University



### Designing an energy-saving building







## SDG 11: SUSTAINABLE CITIES AND COMMUNITIES

Promote walking by building up walkway connecting each building



Accommodation staff

Work from home campaign



Cooperation with Kalasin Municipality to develop a model of learning city





## SDG 11: SUSTAINABLE CITIES AND COMMUNITIES

**The development from planning – The new buildings standards**

**The construction of new buildings based on the sustainable standards**

Kalasin University has specified the plans and standards for the construction of new buildings based on sustainable standards. It was implemented on the construction of the new group of buildings of The Center of Excellence of Kalasin Praewa Traditional Textile Kalasin University as follows:

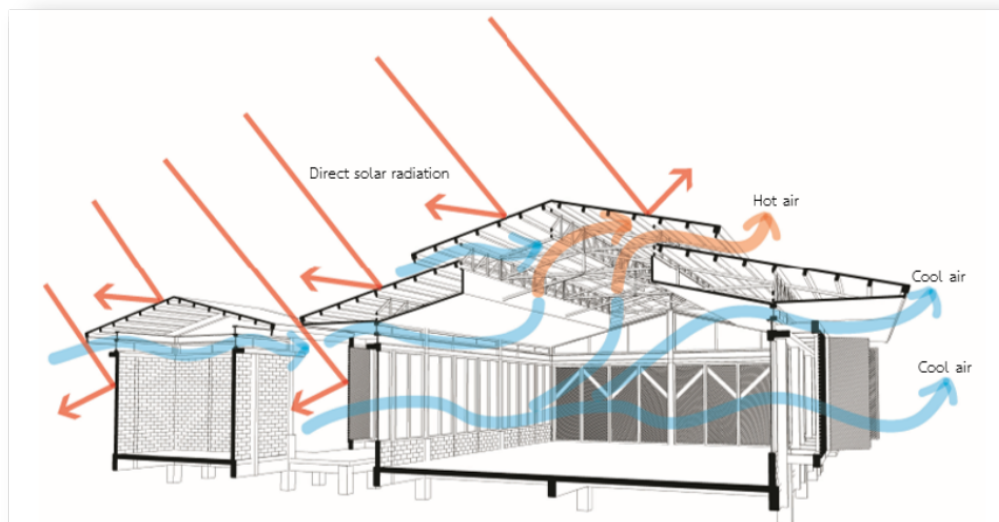
### **1.Silkworm Raising House**

**The design of new buildings based on the sustainable standards**

**Planning of Building:**

The building was designed to suit the tropical climate. The long wall of the building was designed to turn to the north-south line which can receive wind. Moreover, there is a group of buildings including the main house for raising silkworms and resting mulberry leaves which looks like a rectangle while the small houses were used to store fixtures and equipment. The narrow wall of the main house turns to the building's entrance street matching the east-west direction which is in accordance with the principle of building planning

**Picture of Silkworm Raising House:**

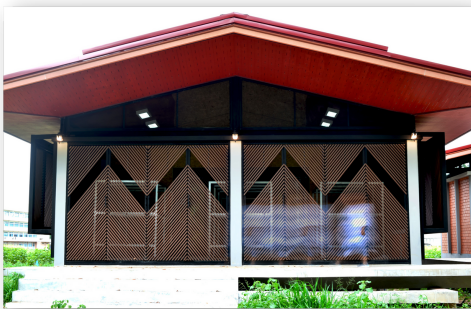






## SDG 11: SUSTAINABLE CITIES AND COMMUNITIES

Picture of Silkworm Raising House:

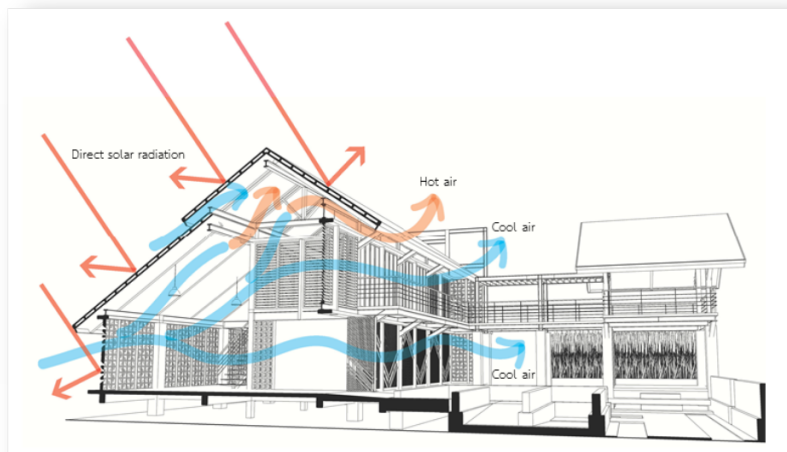


### 2. Exhibition Buildings

The design of new buildings based on the sustainable standards

**Planning of Building:**

The group of exhibition buildings consists of an exhibition hall for displaying products for sale. It has the rectangular layout and the multipurpose hall. Due to the limitation of the location, the facade of the building, which is a long wall, was designed facing east to connect to the entrance street of Kalasin University. The long side of the building is facing west and shades the courtyard and multipurpose pavilion in front of the building's main entrance in the hot afternoon until sunset.







## SDG 11: SUSTAINABLE CITIES AND COMMUNITIES

Picture of Exhibition Buildings :





## SDG 16: PEACE, JUSTICE AND STRONG INSTITUTIONS

Kalasin University greatly focuses on good governance and justice for being a strong institution with good governance through various operations as follows:

### Administrative measures of the university

University rules and regulations have been issued to select representatives in various sectors in university such as the election of members of student organization, the election of the president of student council, and the election of faculty representative for university council positions.

### The election of representative of staff





## SDG 16: PEACE, JUSTICE AND STRONG INSTITUTIONS

The president of student's council of academic year 2020



The meeting of public hearing from student organization and student council







## SDG 16: PEACE, JUSTICE AND STRONG INSTITUTIONS

Kalasin University participated in the "Integrity and Transparency Assessment: ITA" organized by the Office of the National Anti-Corruption Commission emphasizing on the participation, transparency, fairness, and academic independence of university staff. As a result of the assessment, Kalasin University scored of 91.31 in 2020 which was at the A level, and this result was published on Kalasin University website.





## SDG 16: PEACE, JUSTICE AND STRONG INSTITUTIONS

### Publishing Financial Reports

Kalasin University has published financial reports through the university website as the link below:

<https://th.ksu.ac.th/%e0%b8%94%e0%b8%b2%e0%b8%a7%e0%b8%99%e0%b9%8c%e0%b9%82%e0%b8%ab%e0%b8%a5%e0%b8%94%e0%b9%80%e0%b8%ad%e0%b8%81%e0%b8%aa%e0%b8%b2%e0%b8%a3%e0%b8%ad%e0%b8%b7%e0%b9%88%e0%b8%99%e0%b9%86>



An example of a web page of a financial report



## SDG 16: PEACE, JUSTICE AND STRONG INSTITUTIONS

### Collaboration with government

Kalasin University received policies and budget from government to establish a Center of Excellence of Kalasin Phraewa Praewa Traditional Textiles through the integration of the local wisdom and knowledge in terms of local fabrics weaving to improve its value for generating sustainable incomes of the local people.



The showcase of outstanding Kalasin textiles at the “Local to Global: Visions of Isan event” organized by the Ministry of Foreign Affairs, the Ministry of Interior, and Tourism Authority of Thailand



Presentation of local textiles and natural dying to the Prime Minister during the Exhibition at the Government House





## SDG 16: PEACE, JUSTICE AND STRONG INSTITUTIONS

### The cooperation with the government in conducting research

Kalasin University has collaborated with the Royal Thai Government through many research projects as follows:

#### 1. Kalasin Model

Asst. Prof. Dr. Keerawit Petchul, Dean of the Faculty of Agricultural Technology, and the Project Leader of the Project of Improving Foundation Economy: Provincial Model which focuses on providing people and farmers who have an average monthly income of 10,000 baht.





## SDG 16: PEACE, JUSTICE AND STRONG INSTITUTIONS

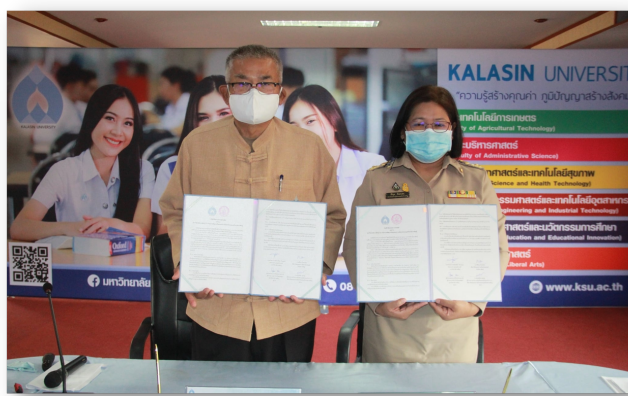
2. The research on “Cooperative Integrated Area-Based Development to Solve the Poverty Comprehensively and Accurately: A Case Study in Kalasin Province” in 2020, supported and funded by the Science, Research, and Innovation Promotion Fund and the Administrative and Management of Research and Innovation Fund on Area-Based Development in the amount of 10,000,000 baht for research and alleviate poverty of the people in Kalasin province.





## SDG 17: PARTNERSHIP FOR THE GOALS

Kalasin University has collaborated with networking partners in provinces and regions to solve poverty problems in region through the project of studying the prospects of changes in the future for social innovation development in Kalasin Province. This project is a cooperation from all sectors in the province to brainstorm for the opinions to direct provincial development regarding the sustainable development goals.







62/1 kasetsoomboon Rd, Mueang district, Kalasin  
province. 46000  
Thailand

## Contact information:

**Associate Professor Kathanyoo Kaewhanam,Dr.  
Assistant to the President**

**Assistant Professor Sattria Sahatsathatsana,Ph.D.  
Assistant to the President**

[www.ksu.ac.th](http://www.ksu.ac.th)

[dr.kathanyoo@ksu.ac.th](mailto:dr.kathanyoo@ksu.ac.th)

[https://www.facebook.com](https://www.facebook.com/Kalasin.university)

/Kalasin.university

+66.43.811.128

